

SmartTrace®

APPLICATION INSTRUCTIONS FOR HOUSEHOLD POSSESSIONS



0800 141 2543 | www.shop.smartwater.com



KC029

WHAT IS SMARTTRACE®?

SmartTrace® forensic liquid is an ideal security solution for homeowners looking to protect their valuables from theft, because it is simple to use, incredibly robust, requires no maintenance and will last for many years.

SmartTrace® is simply dabbed on to items you wish to protect, providing instant protection. The liquid contains a unique forensic code that creates an irrefutable link back to the homeowner in the event of a theft and subsequent recovery.

Because of SmartWater's ability to place offenders at the scene of crime, the SmartWater brand serves as a powerful deterrent. In fact, 74% of criminals said they would not commit a crime at a location displaying SmartWater deterrent signage.*

NEED MORE LIQUID OR LABELS?

You can purchase additional SmartTrace® home and sole trader packs by visiting our online shop.

* Perpetuity Research and Consultancy. An Evaluation of SmartWater: Offenders' Perspectives

> RE-APPLYING SMARTTRACE™

If re-applying SmartTrace™, please attempt to apply the new liquid to areas that have not previously been marked. If uncertain, please check for the presence of a previous application using an ultraviolet light (long wave, 365nm) - where any areas previously marked will glow a bright yellow-green. By following these instructions, you will help simplify analysis in the event of theft and subsequent recovery of the marked item.

> HEALTH & SAFETY / FIRST AID

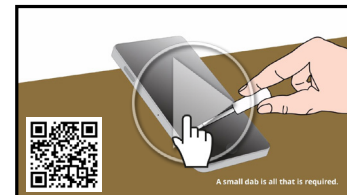
Keep SmartTrace® out of reach of children. Use gloves and eye protection during application. Please clean up spillages, they can create a slip hazard. Contact with eyes: rinse with plenty of water for at least 15 minutes. Contact with skin: immediately wash the area with soap and water. If SmartTrace® has been accidentally swallowed: wash out mouth with water and consult a doctor if any symptoms develop.

> DISPOSAL INSTRUCTIONS


SmartTrace® forensic liquid is water-soluble and not harmful to the environment. Any out-of-date or unwanted liquid can therefore be safely disposed of by thoroughly diluting the liquid and pouring it down a sink with plenty of cold water. SmartWater will not accept liability for any damage to property if the Application Instructions are not followed. The SmartTrace® forensic liquid in this bottle is valid for your address only. Please refer to www.smartwater.com/coa for instructions on how to change your registered address or other contact details.

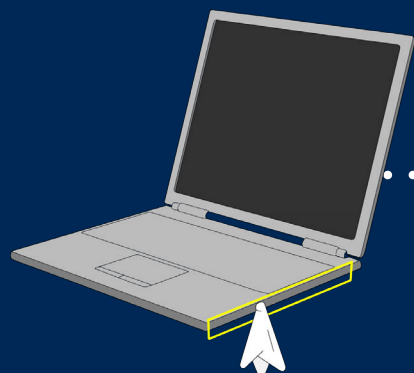
IMPORTANT:

SmartTrace® is Non-hazardous when dry and applied in accordance with these application instructions. Any individual who has previous sensitisation to 1 2-benzisothiazol-3(2h)-one should seek medical advice prior to use.



WATCH
How to apply
SmartTrace® forensic liquid

 The liquid is touch dry within 30 minutes, but will take 24 hours to cure completely.



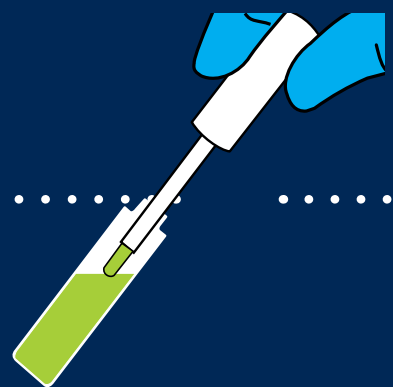
STEP 1

Ensure that all areas that you plan to mark are clean and dry first. Suitable surfaces need to be uneven or irregular (avoiding smooth surfaces). Also make sure electricals are disconnected from the mains during application.



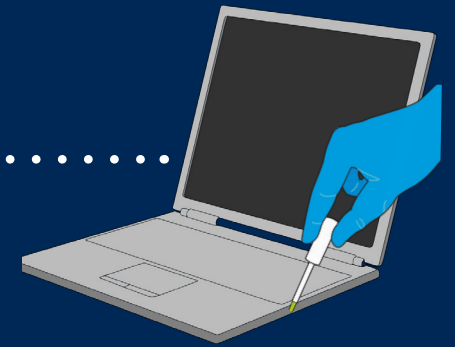
STEP 2

Shake the bottle for approximately 10 seconds before use.



STEP 3

Insert the applicator into the bottle, collecting a small amount of liquid.




STEP 4

Apply a small dab to the item you wish to protect. This will be sufficient to recover the unique code, should the item be stolen and later found.

THINGS TO AVOID

- > DON'T dilute your SmartTrace[®] forensic liquid.
- > DON'T write with the liquid.
- > DON'T apply to smooth surfaces.
- > DON'T apply to items when connected to the mains.
- > DON'T apply the liquid in conditions in which frost can form.
- > DON'T apply the liquid to functional parts such as electronic ports or displays.
- > DON'T apply the liquid to moving parts such as nuts, keys or switches.

 SmartTrace[®] is best stored at room temperature.



STEP 7

Once the user has finished applying SmartTrace[™], the applicator needs to be rinsed under a tap, stored securely and the lid replaced on the bottle, so that it can be used again if required.



STEP 6

Register at www.smartwater.com/registration to ensure your marked property can be identified if lost or stolen.



STEP 5

Place the supplied deterrent signage on windows and doors, as well as on applicable marked property.